




Updated on 23 August 2024

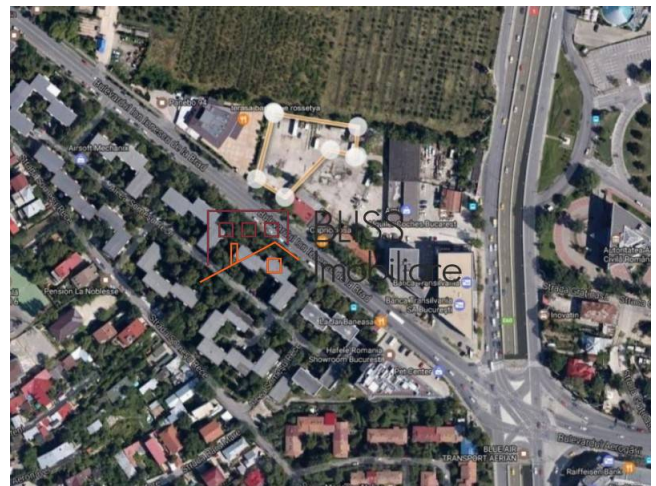
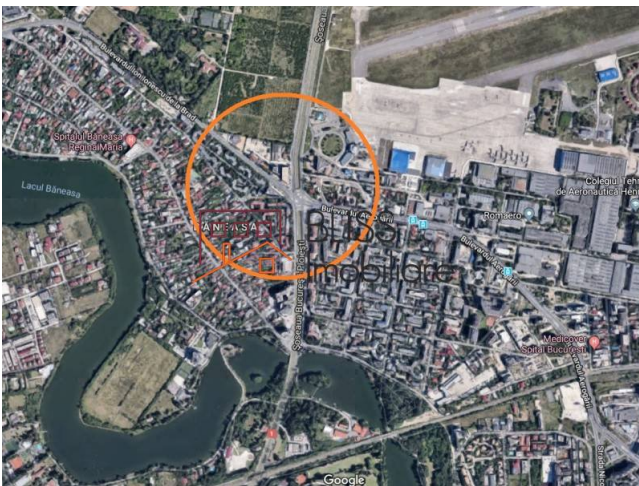
Land for sale 2,750 m² near Baneasa Aeroport, Sector 1, Bucharest

Price on demand
800 EUR / m²

Web Reference

#900019

 Baneasa Aerogarii, Bucharest



<http://ec2-3-72-183-126.eu-central-1.compute.amazonaws.com/en/land-for-sale-herastrau-nordului-bucharest-900019>

Description

LAND OF 2750 MP IN BANEASA - SECTOR 1, BUCHAREST.

The land is located in the north area, opposite to Baneasa airport. It consists of two lots, one of 2500 sqm and the other of 250 sqm and has an opening on the boulevard of ~ 21 ml

Destinations: hotel, commercial, office, residential, hospital

The future construction will have a maximum height of GF + 3 on the street and GF + 2 in the rear area of the plot.

Neighborhoods: Banca Transilvania headquarter, Baneasa airport, Regina Maria hospital, Private schools & kindergardens, DN1, Baneasa shopping city, IKEA, RATB


Facilities: All utilities are on the street

On the 250sqm land, there are two demolition hall buildings.

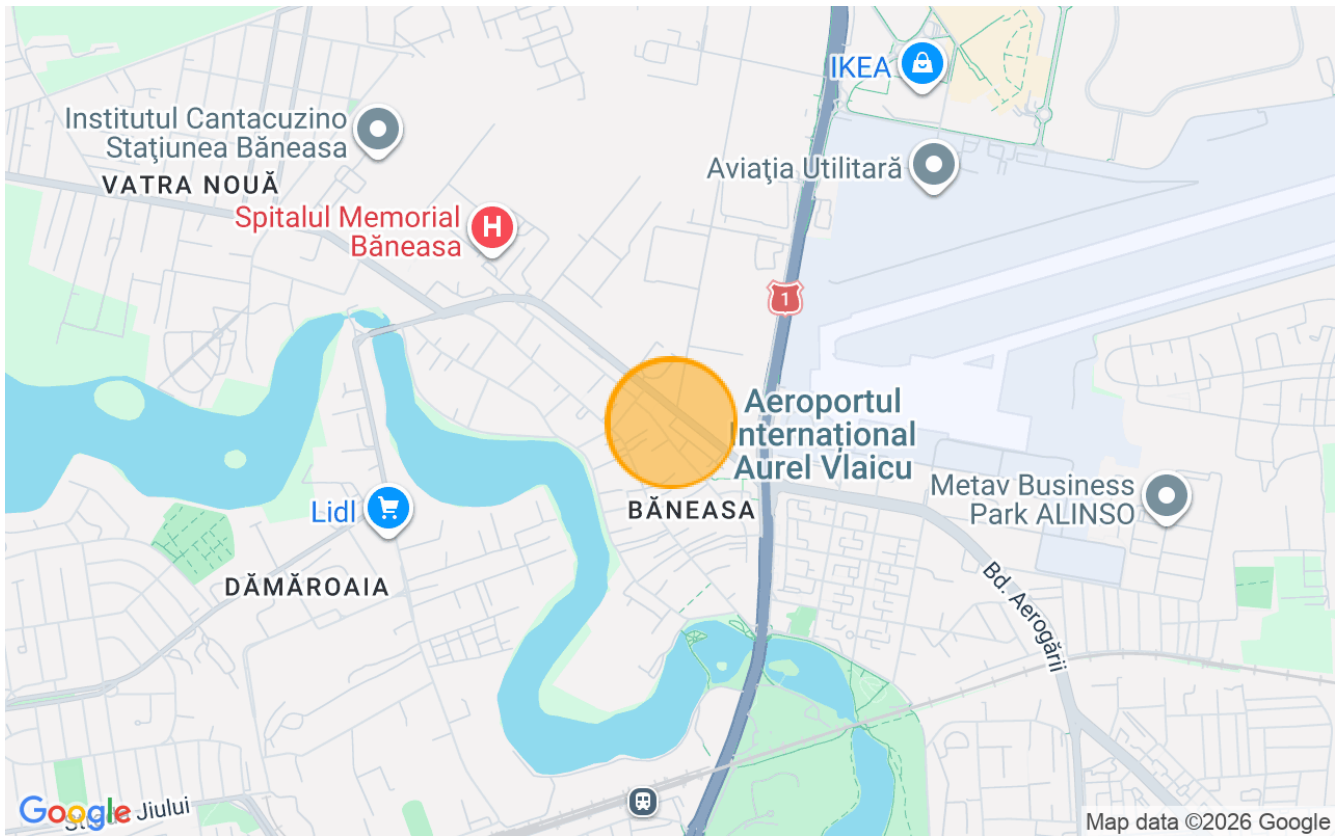
For more details and informations, we are at your disposal.

Land details	
Land type	Constructible land
Size	2,750 m ²
Land usage coefficient	2.2
Percentage of occupation	50%
Street openings	21 m
Protected area	No

Utilities

 Electricity

Location



Photos

