




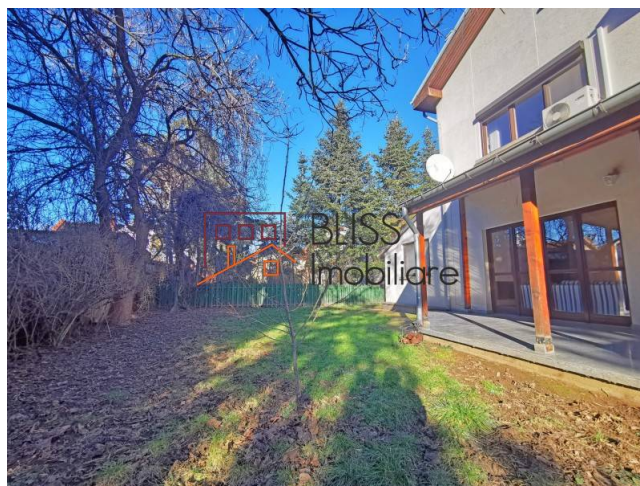
Updated on 29 Iulie 2024

## 5 bedroom villa in residential complex Iancu Nicolae

Web Reference

**#86112**

 Alfa Town (Impact), Iancu Nicolae, Bucharest / Ilfov



<http://ec2-3-72-183-126.eu-central-1.compute.amazonaws.com/en/house-5-bedrooms-for-rent-iancu-nicolae-pipera-bucharest-ilfov-86112>

### Description

5 Bedroom villa in secured compound on strada Iancu Nicolae at only 5 minutes walking to the British School of Bucharest.

## Quiet complex excellent for families with children

The complex has a mixed community with Romanian families as well as expat families.

The house is well laid out with at the ground floor an entrance hallway, guest toilet, closed kitchen, dining area, living area with access to the terrace and an office room. Further there is a garage for one car, a laundry and technical room. For parking there are two other places in front of the garage and in front of the house.

On the first floor are three bedrooms of which one with en suite bathroom. The other bedrooms share a hallway bathroom.

On the second floor are two bedrooms and a hallway bathroom.

The total land surface is 405 sqm of which appx 280 sqm is for the garden.

Quiet complex, away from the noisy street. Excellent for families with children.

| Property details    |          |
|---------------------|----------|
| Rooms no.           | 6        |
| Useable surface     | 213m²    |
| Constructed surface | 250m²    |
| Bedrooms no.        | 5        |
| Kitchens no.        | 1        |
| Bathrooms no.       | 3        |
| Toilets no.         | 1        |
| Building type       | House    |
| Year built          | 2002     |
| State               | Finished |
| Total land          | 406m²    |
| Print               | 120m²    |
| Courtyard           | 280m²    |
| Parking inside      | 1        |
| Parking outside     | 1        |

Amenities



Equipped kitchen



Dishwasher



Semi furnished



Private heating



Suitable for office



Air conditioning

## Location



## Photos

