




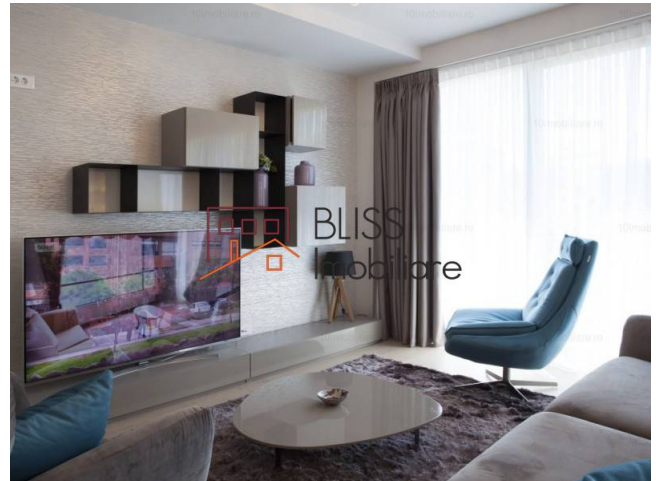
Updated on 16 Martie 2019

## 2 bedroom apartment

Web Reference

**#58369**

 Eclipse Residence, Dorobanti Capitale, Bucharest



<http://ec2-3-72-183-126.eu-central-1.compute.amazonaws.com/en/apartment-2-bedrooms-for-rent-dorobanti-primaverii-kiseleff-aviatorilor-bucharest-58369>

### Description

Superb apartment 136 sqm (108 useful) in the Dorobanti Capitale area.

Located on the 3rd floor and with extremely generous windows the apartment is very bright and offers a great view.

It has 2 bedrooms, 42 sqm living room, 3 bathrooms with a shower and separate bathtub in the master bedroom and a terrace of 9 sqm.

The apartment is fully furnished and equipped to the last detail. Everything is absolutely new.

Comfortable living with a smart-house system with lighting scenarios and temperature control over the Internet or from the central control panel.

The apartment benefits from 2 underground parking spaces. The elevator offers direct access in the apartment.

Live a high end live in a high end apartment in a high end area!

Property details	
Rooms no.	3
Useable surface	108m <sup>2</sup>
Constructed surface	136m <sup>2</sup>
Apartment type	Apartment
Type of rooms	Independent
Type of comfort	Deluxe
Bedrooms no.	2
Kitchens no.	1
Bathrooms no.	3
Building type	Block
Year built	2016
Config	1S+P+4
Floor	3
Balconies no.	1
State	Finished
Elevator	Yes
Parking inside	2
Common service charges	300.00 EUR


## Amenities

 Equipped kitchen

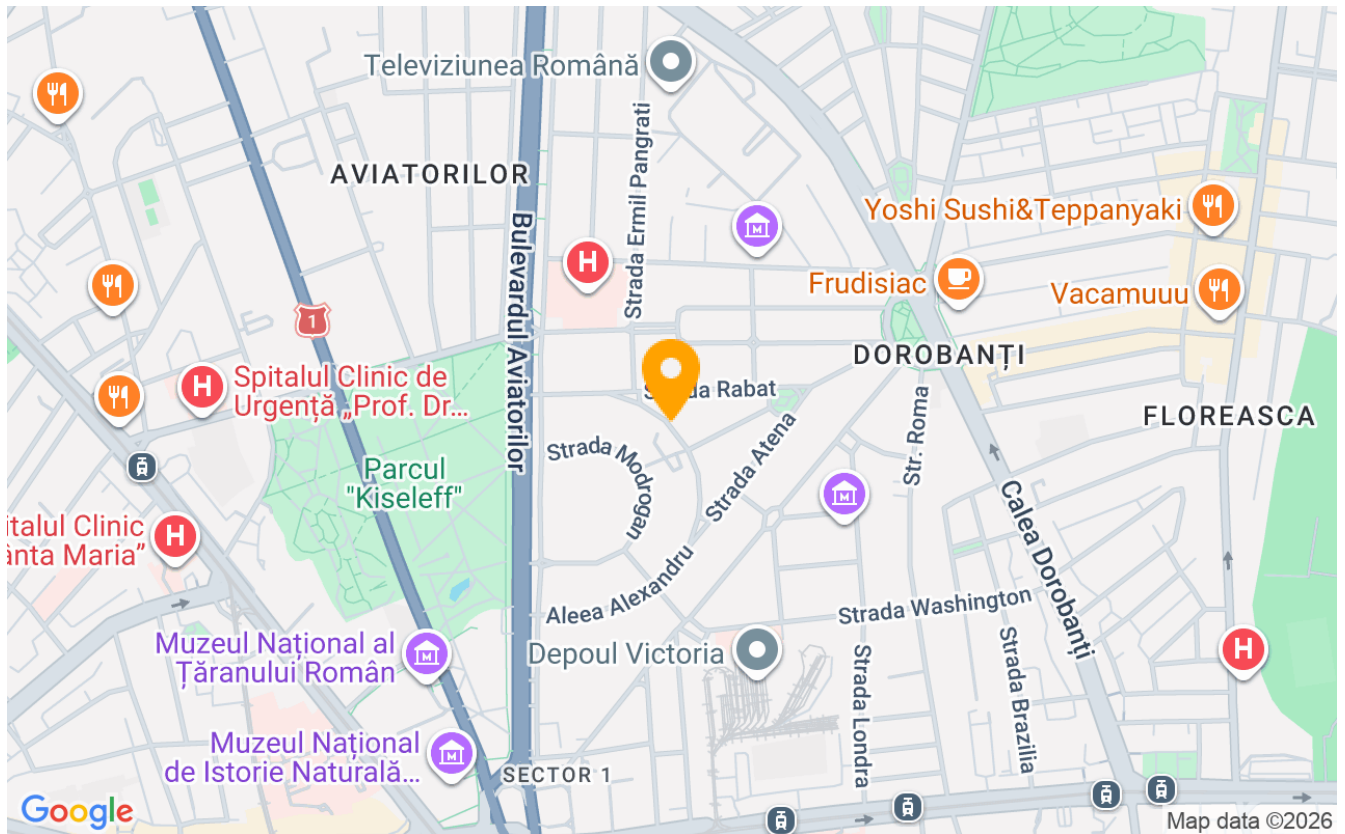
 Dishwasher

 Furnished

 Private heating

 Air conditioning

## Location



## Photos

